

## swela elegance

- ✳ 100% Polyestergewebe mit schmutz- und wasserabweisender Imprägnierung
- ✳ Flächengewicht von ca. 310 g/m<sup>2</sup>
- ✳ Exzellenter UV-Schutz mit UPF 50+ Schutz vor schädlicher UV-Strahlung
- ✳ Höchste Lichtechtheit des Gewebes (DIN EN ISO 105-B02 | Klasse ≥ 7–8)
- ✳ Hohe Wasserdichtigkeit, Druckbeständigkeit (EN 20811, ISO 811 | Wassersäule ≥ 35 mbar, 350 mm)
- ✳ Wetterechtheit (DIN EN ISO 105-B04 | Klasse ≥ 7–8)
- ✳ Sehr gute Reibechtheit (DIN EN ISO 105-x12 | Klasse ≥ 4–5)
- ✳ Hohe Reißfestigkeit
- ✳ Ausgeprägte, textile Haptik
- ✳ Nicht bedruckbar

- ✳ 100% polyester fabric with dirt and water repelling impregnation
- ✳ Gammage of approx. 310 g/m<sup>2</sup>
- ✳ Excellent UV-protection UPF 50+ protects against harmful UV radiation
- ✳ Highest degree of fabric lightfastness (i.e. fading) (DIN EN ISO 105-B02 | Class ≥ 7–8)
- ✳ High waterproofness, pressure resistance (EN 20811, ISO 811 | Water column ≥ 35 m bar, 350 mm)
- ✳ Weather fastness (DIN EN ISO 105-B04 | Class ≥ 7–8)
- ✳ Excellent friction resistance (DIN EN ISO 105-x12 | Class ≥ 4–5)
- ✳ High tear resistance
- ✳ Distinctive surface feel
- ✳ Not printable

**BAHAMA**<sup>®</sup>

One

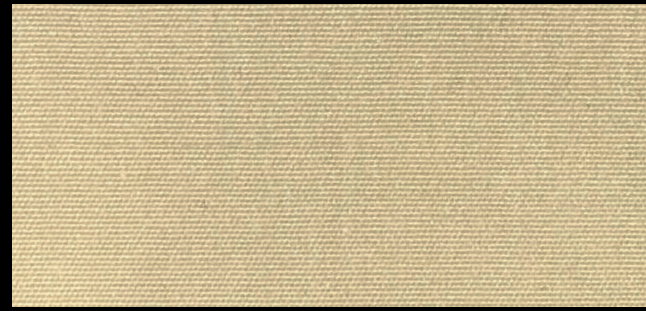
Farb- und Textilmuster Polyestergewebe  
– Exklusive Kollektion –

*Color & Textile Chart Polyester Weave  
– Exclusive collection –*

swela elegance

**BAHAMA**<sup>®</sup>

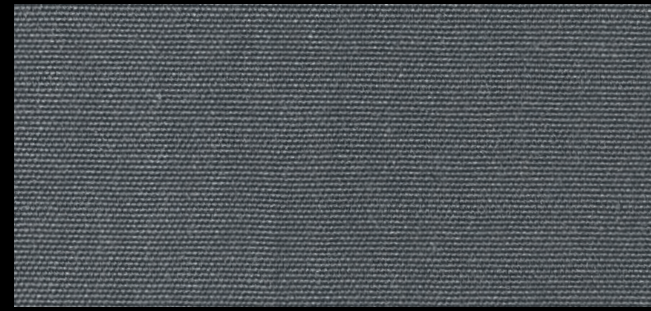
Design by  
**STUDIO F·A·PORSCHE**



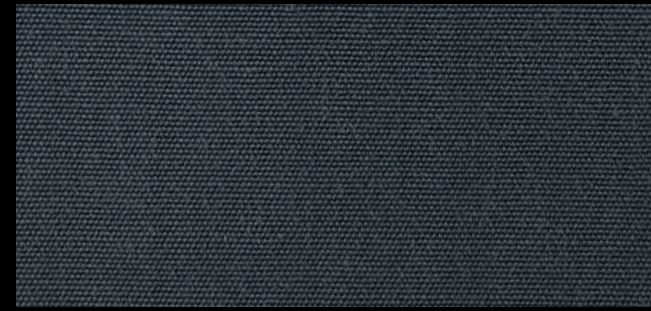
310 27 | vanille . vanilla



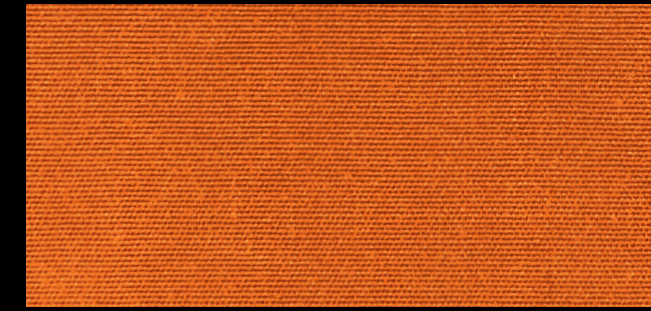
310 09 | himmel . sky



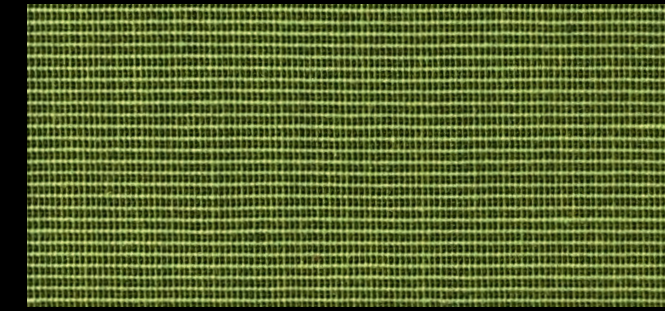
310 08 | stahl . steel



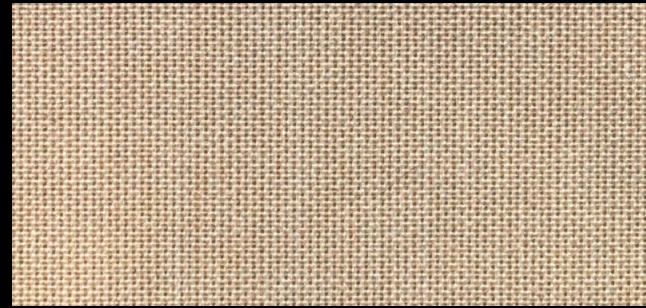
310 18 | schiefer . slate



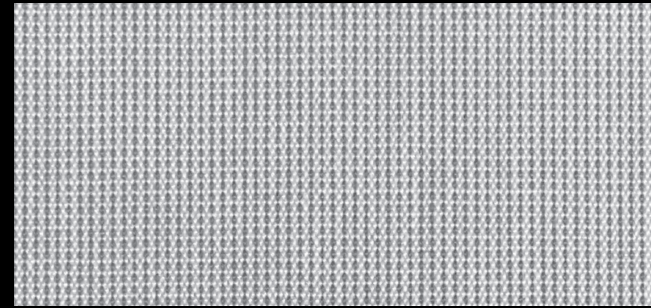
310 02 | mandarine . mandarin



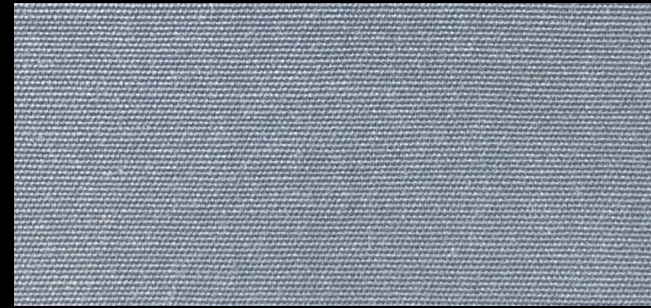
314 86 | kiwi . kiwi



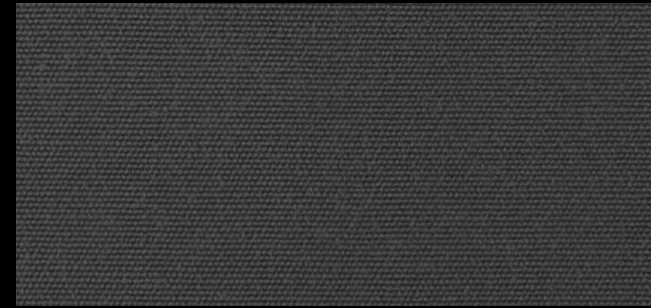
309 37 | wüste . desert



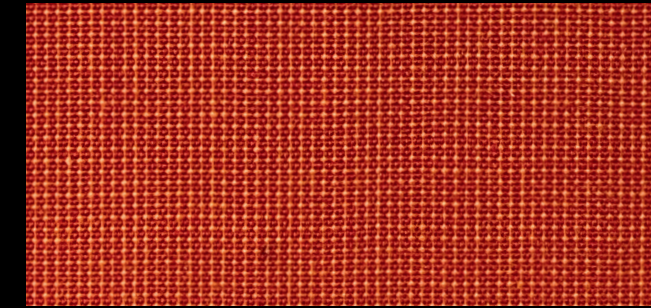
309 18 | fisch . fish



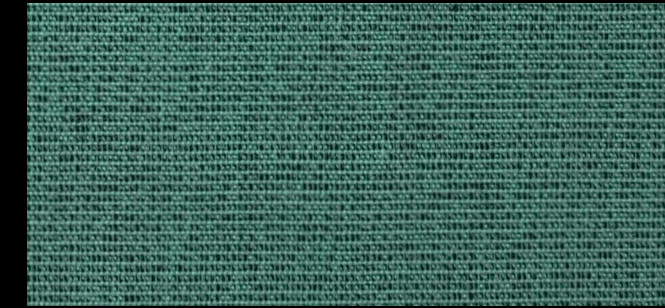
310 48 | maus . mouse



310 58 | nacht . night



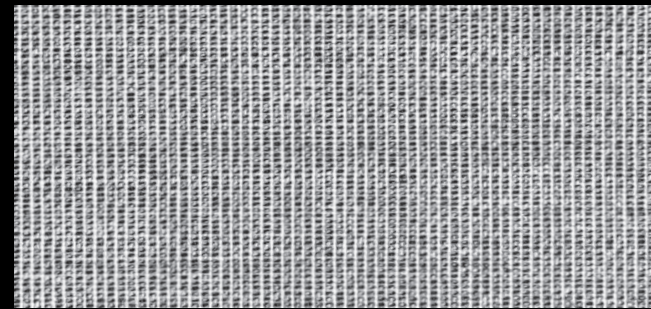
309 12 | lava . lava



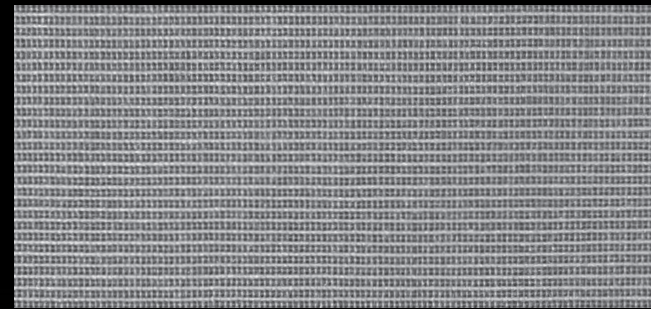
361 17 | salbei . sage



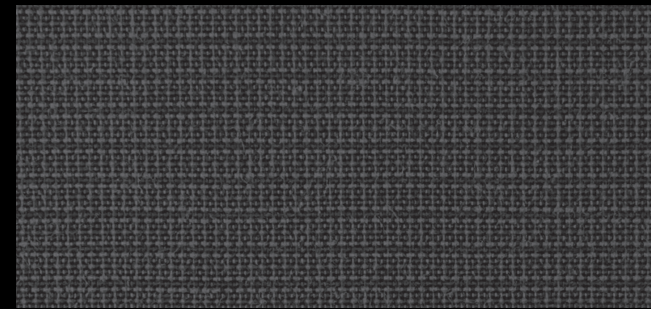
310 37 | leinen . linen



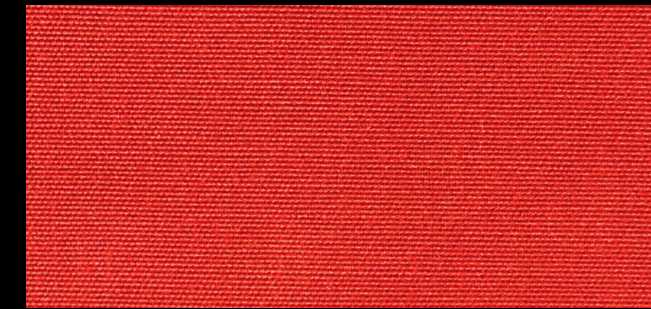
361 09 | nebel . fog



315 95 | asphalt . asphalt



309 58 | basalt . basalt



310 43 | tomate . tomato



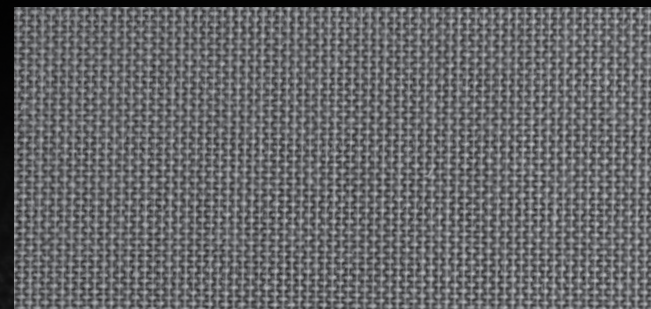
361 05 | taube . dove



310 57 | sandstein . sandstone



361 07 | natur . nature



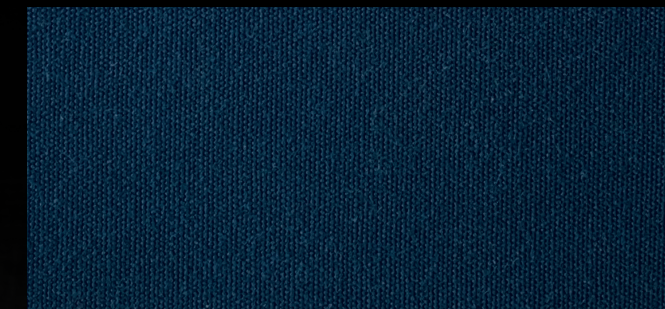
309 48 | zement . cement



310 28 | panther . panther



361 03 | kirsche . cherry



310 35 | marine . marine